



# Insights into the Field

Inclusive Strategies for Orienting  
First-Year International Students



Curated by:  
International and  
Exchange Student  
Services Task Force  
*2020-2021*

# Introduction

Welcome to Diversity Abroad's Insights into the Field Resource. These short e-learning resources are designed to provide professionals with insight and practical tools to support and advance inclusive excellence in global education.

*Insights into the Field* are facilitated by members of the Diversity Abroad community who are passionate about the field of diversity, inclusion, and global education. The topic of this Insights into the Field is Inclusive Strategies for Orienting 1st- year International Students

# This session will:

- Provide recommendations for more inclusive orientation programming
- Identify ways to address language, culture, and sensitive topics in an inclusive manner during international student orientation
- Examine effective community building strategies for virtual and hybrid orientations

## Session Objectives

# Session Objectives

## This session will not:

- Serve as an introduction for planning International Student Orientation
- Address all concerns that may be relevant to new first-year international students
- Cover all aspects related to inclusivity and community building at International Student Orientation



# Presenters



**Asia King (she/her)**

International Programs Coordinator,  
Office of International Services,  
North Carolina State University

**Gabriella Santoro (she/her)**

Associate Director,  
Experiential Global Learning,  
University of Connecticut





# Presenters



**Nahla Menasy (she/her)**

Volunteer  
AFS-USA

**Nicole Garcia (she/her)**

Associate Director,  
Office of International Education  
Harvard University

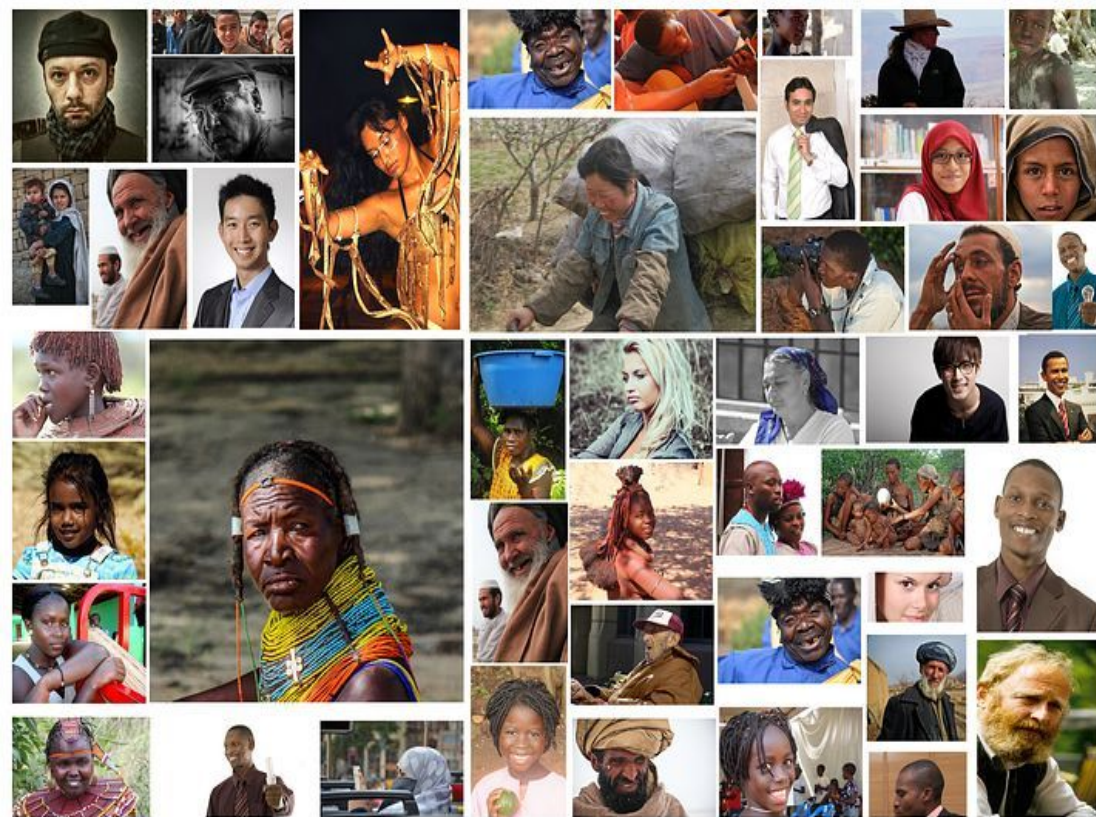


# Language & Culture

Strategy	Examples
Provide context	Title IX, FERPA, plagiarism
Define terms	<ul style="list-style-type: none"><li>• Cultural references</li><li>• Slang</li><li>• Abbreviations</li><li>• US college &amp; institution-specific language</li></ul>
Provide alternative Q&A methods	Tools like Poll Everywhere, Padlet or Slido allow students to ask questions anonymously

# Community Building Strategy

- Work with returning international students to identify language they found inaccessible during previous orientations
- Invite domestic students to act as language ambassadors before, during, and after orientation.





# Addressing Sensitive Topics



- Academic Expectations
  - Office Hours = “student hours”
  - Communication & (in)formality
  - Academic integrity
    - honor codes
    - collaboration
    - proper citation
  - Academic Resources -normalize asking for help

# Addressing Sensitive Topics



- Interpersonal Conflict Resolution
- Health & Wellness
- College Social Life
  - Partying
  - Drinking
  - Dating
- US & local laws



# Community Building Strategy

- Use orientations to set up a pen pal system with US and international students
- Give US and international students weekly discussion topics so they have a point of connection about important topics
- Leverage past experiences of returning international students to improve programming and support

# Virtual & Hybrid Orientations

**1**

Student Led and Student Informed  
Orientation

**2**

Engagement Leaders on Virtual Platforms

**3**

Welcome Events

**4**

Cultural Organization Involvement

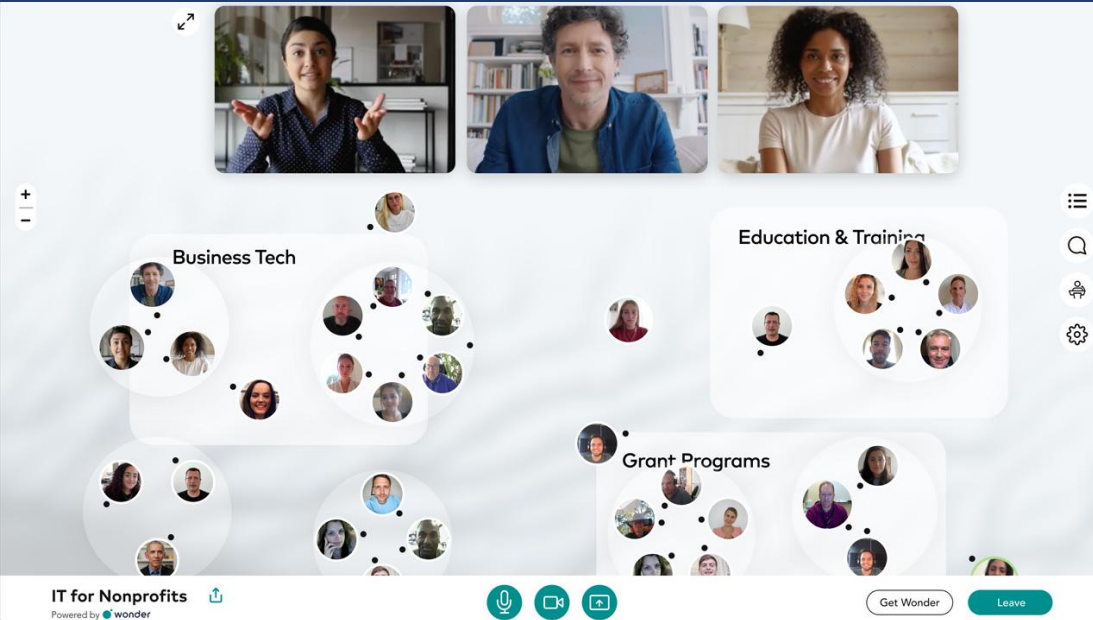




# Student-Led and Student Informed Orientations

- Orientation Small Group Leaders can assist in providing an accurate perspective on the student experience
- Lean on your assessment of previous Orientation sessions
- Just ask your incoming students!





# Engagement On Virtual Platforms

- Familiarize yourself with your virtual platform or incorporate new ones
- Allow opportunities for students to engage with content that is most accessible to them
- Connect with your institutions DEI Specialist or Office to assess your blind spots



- Provide multiple opportunities for engagement
- Consider the timing of your events
- Advertise other campus opportunities

# Welcome Events



# Cultural Organization Involvement

- Promote your institution's cultural organizations
- Connect with student organization leaders
- Ensure broad representation from your campus community

# Reflective Questions

1

How can I foster a sense of inclusivity and belonging at International Student Orientation?

2

What aspects of the international student experience should I be aware of when planning orientation and supporting international students on campus?

3

What are some elements highlighted in this presentation can I incorporate in my work?

4

What barriers prevent me from creating an inclusive orientation and who can help me navigate them?



# Inclusive Strategies for Orienting First-Year International Students

# Thank you!

